

Freight Rail Line Feasibility Study San Juan County, New Mexico

“Opening the doors of economic opportunity”

Public Meeting - Wednesday, June 21, 2023
Newcomb High School
Newcomb, NM

Public Meeting - Thursday, June 22, 2023
Navajo Technical University
Crownpoint, NM



4 Corners Freight Rail
Feasibility Study

Welcome and Introductions

Navajo Nation



San Juan County



Newcomb High School / Navajo Technical University



HDR



Four Corners Freight Rail Feasibility Study

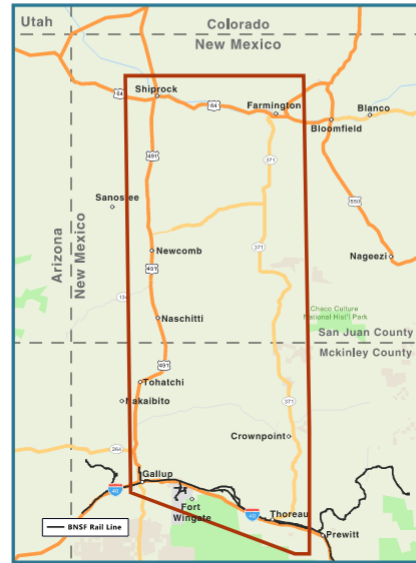


YOU'RE INVITED!

Public Information Meetings on the Four Corners Feasibility Study – September 13-14, 2022

San Juan County, the Navajo Nation, and the Federal Railroad Administration are studying the economic feasibility of freight rail service to the Four Corners region. The addition of this service would not only add freight rail to the region but could also potentially reduce commercial traffic, decrease the potential for traffic accidents, and open up the doors of economic opportunity to the region.

The Four Corners Freight Rail Study Team will be holding Public Information meetings to introduce the study to the community and share information on what the project benefits are, the funding and the study timeline.



Public Information Meetings

Tuesday, September 13, 4-7 p.m.
Phil L. Thomas Performing Arts Center
US Highway 64
Shiprock, NM 87420

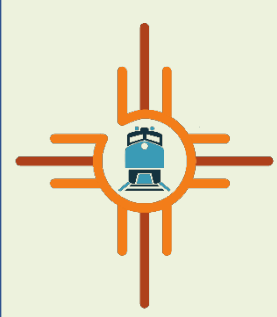
Wednesday, September 14, 4-7 p.m.
Farmington Civic Center
200 W. Arrington St.
Farmington, NM 87401

Persons with disabilities should contact Mike Stark at (505) 334-4271 to arrange for assistance. Individuals who require auxiliary aids or a translator for non-English speaking residents for this meeting should contact San Juan County at least two days before the meeting so that appropriate arrangements can be made.

Learn more at: www.4cornersfreightrail.com

Initial Public Information Meetings

- Two public information meetings held in September of 2022.
 - Sept 13th in Shiprock
 - Sept 14th in Farmington
- Meetings were to inform the public about the project.
- Received initial feedback from the public in attendance.



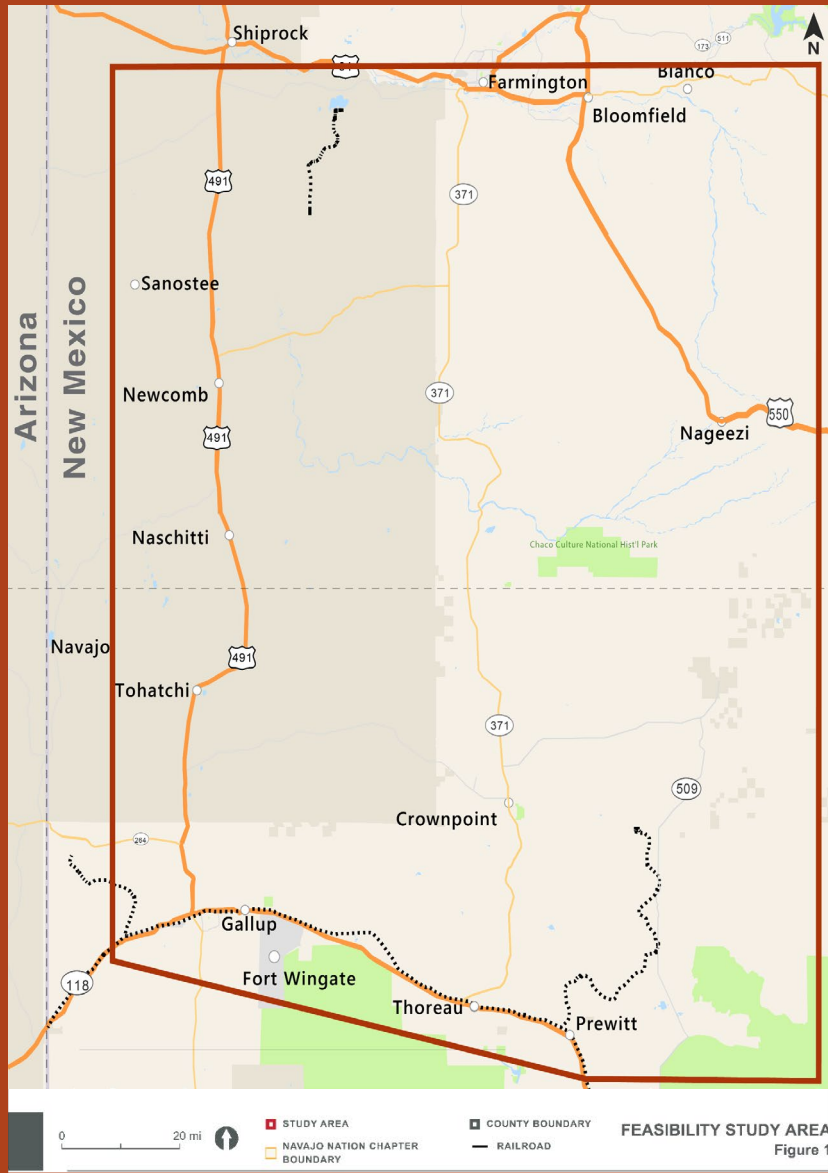
ABOUT THE PROJECT

During the feasibility study, the project team will identify and evaluate potential route alignments, transloading facilities, and rights-of-way. Environmental impacts will be studied, as well as the integration of railroad project development.

Research by the New Mexico Economic Development Department and the City of Farmington found nearly \$20 billion worth of products in projected demand for transport by the railroad industry. A Four Corners rail line could capture a high percentage of the demand when connected to the present BNSF railroad that runs east and west in the southern portion of the Navajo Nation.

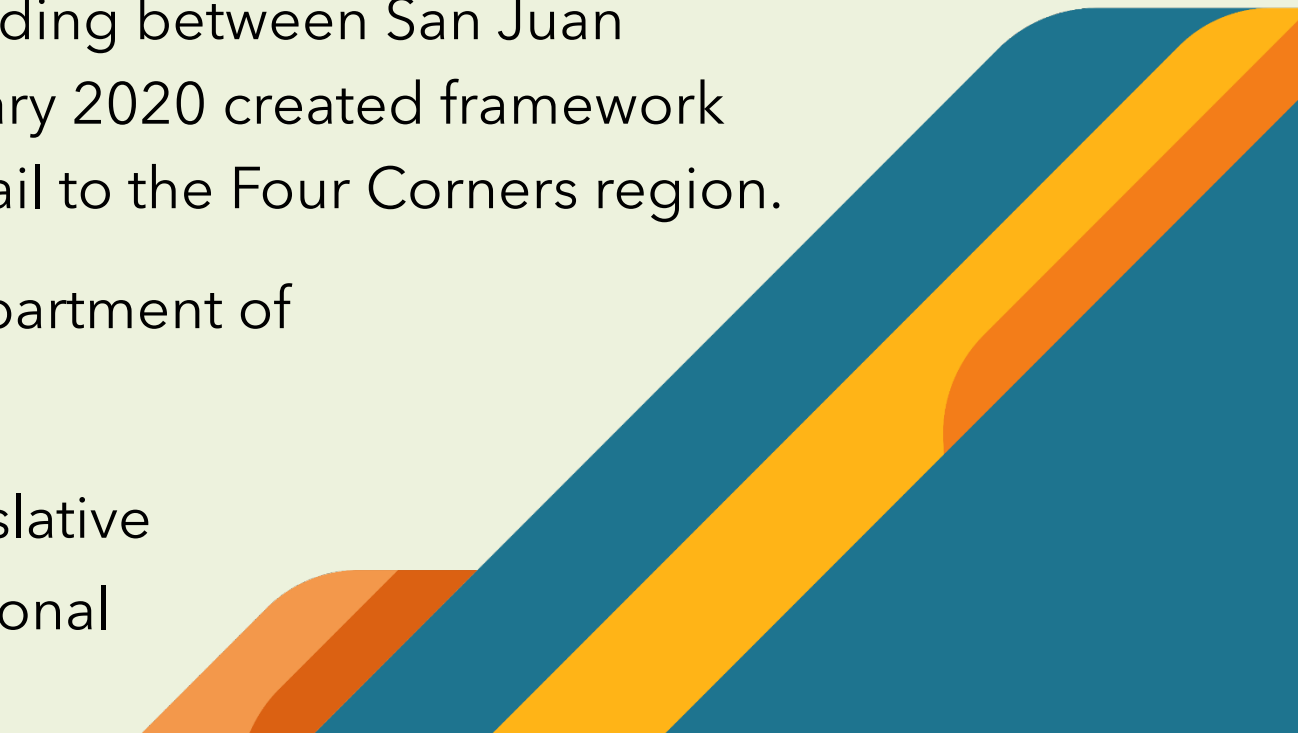


PROJECT OVERVIEW



- Despite 140,000 route miles, the U.S. freight rail network does not currently serve San Juan County, the Navajo Nation, or the greater Four Corners region.
- This proposed project would see the construction of a rail spur and related facilities along U.S. 491/U.S. 371 through the Navajo Nation, connecting the I-40 corridor freight rail system operated by Burlington Northern Santa Fe (BNSF) comprising approximately 100 miles.
- This study will develop activities and alternatives for a proposed new rail line between San Juan County near Shiprock, with a connection to the BNSF Southern Transcontinental Railway near Gallup, which runs between Chicago and Los Angeles.

How did we get here?

- Rail feasibility studied multiple times over the past 50 years- the project never moved forward due to lack of key partnerships and funding, which are now in place.
 - Historic Memorandum of Understanding between San Juan County and Navajo Nation in February 2020 created framework for collective cooperation to bring rail to the Four Corners region.
 - Project funded via \$2 million US Department of Transportation "BUILD" grant.
 - Support from San Juan County Legislative Delegation, Four Corners Congressional Delegation, and the NMDOT.
- 

Funding Source: USDOT's BUILD Transportation Grant

United States Department of Transportation (USDOT)
Better Utilizing Investments to Leverage
Development (BUILD) Transportation Grant

The FY 2019 BUILD program gave special consideration to projects aiming to improve infrastructure conditions, address public health and safety, promote regional connectivity, or facilitate economic growth or competitiveness. San Juan County was awarded a BUILD Grant to support a pre-NEPA project development and alternatives analysis study for a proposed new rail line between San Juan County and the Burlington Northern Santa Fe (BNSF) national freight network along the Interstate 40 corridor.





WHY FREIGHT RAIL?

- About 40% of U.S. freight is shipped by railway, more than any other mode of transportation¹
- Fewer greenhouse gasses (GHGs)
 - Rail accounts for only **2.1%** of total U.S. greenhouse gas emissions². In contrast, idling trucks contribute approximately 20% of annual U.S. carbon emissions.
 - Moving freight by rail rather than trucks lowers greenhouse gas emissions by up to **75%**
 - If 50% of truck traffic moving at least 750 miles went by rail instead, GHGs would fall by ~26.2 million tons
- Railroads are the most fuel-efficient way to move freight over land
 - moving an average of one ton of freight more than 480 miles per gallon
 - On average, railroads are three to four times more fuel-efficient than trucks. A single freight train can carry the freight of several hundred trucks³

¹- FHWA, Freight Analysis Framework, Version 4.5.1, ²- U.S. EPA data, ³- Texas Highway Transportation Institute's 2019 Urban Mobility Report
Source- Association of American Railroads

Lack of Transportation Infrastructure in the Four Corners Area





Public Involvement/ Agency Coordination

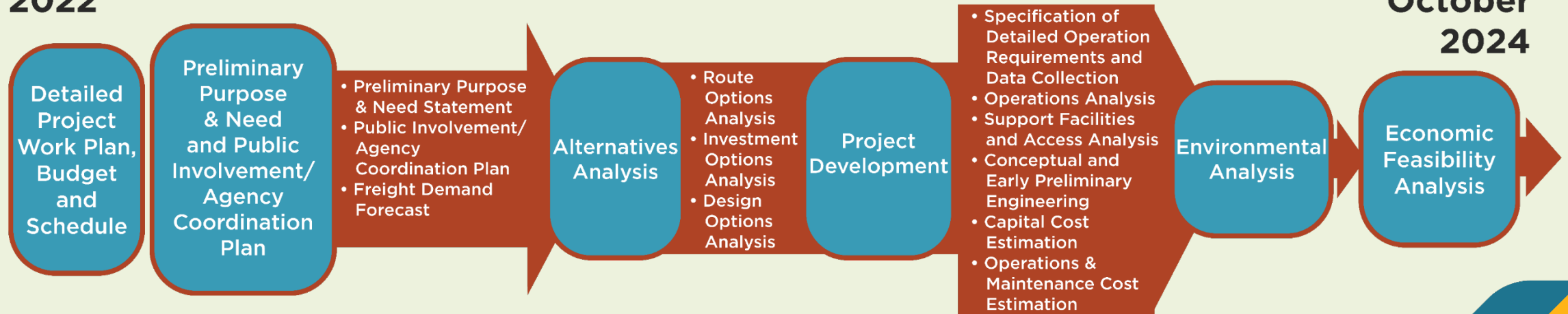
- Subcontract with Al Henderson, AHEC and Tom Chee, Consultant
- Identify 32 chapters that will likely be impacted by the project and obtain resolutions
- Contact each chapter for a consultation
- Present to Navajo Nation elected leaders, NNC committees, departments, agencies and other interested parties
- Coordination with BNSF

Federal Railroad Administration's Process

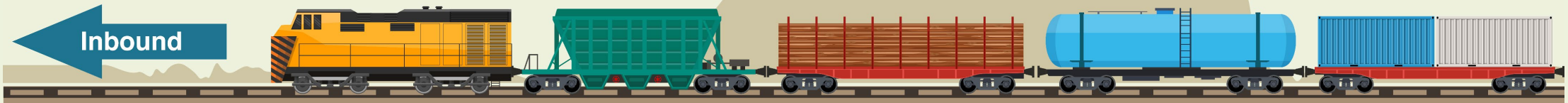
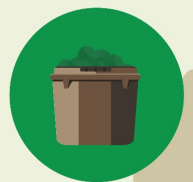
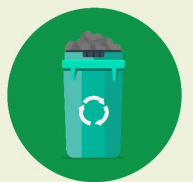


May
2022

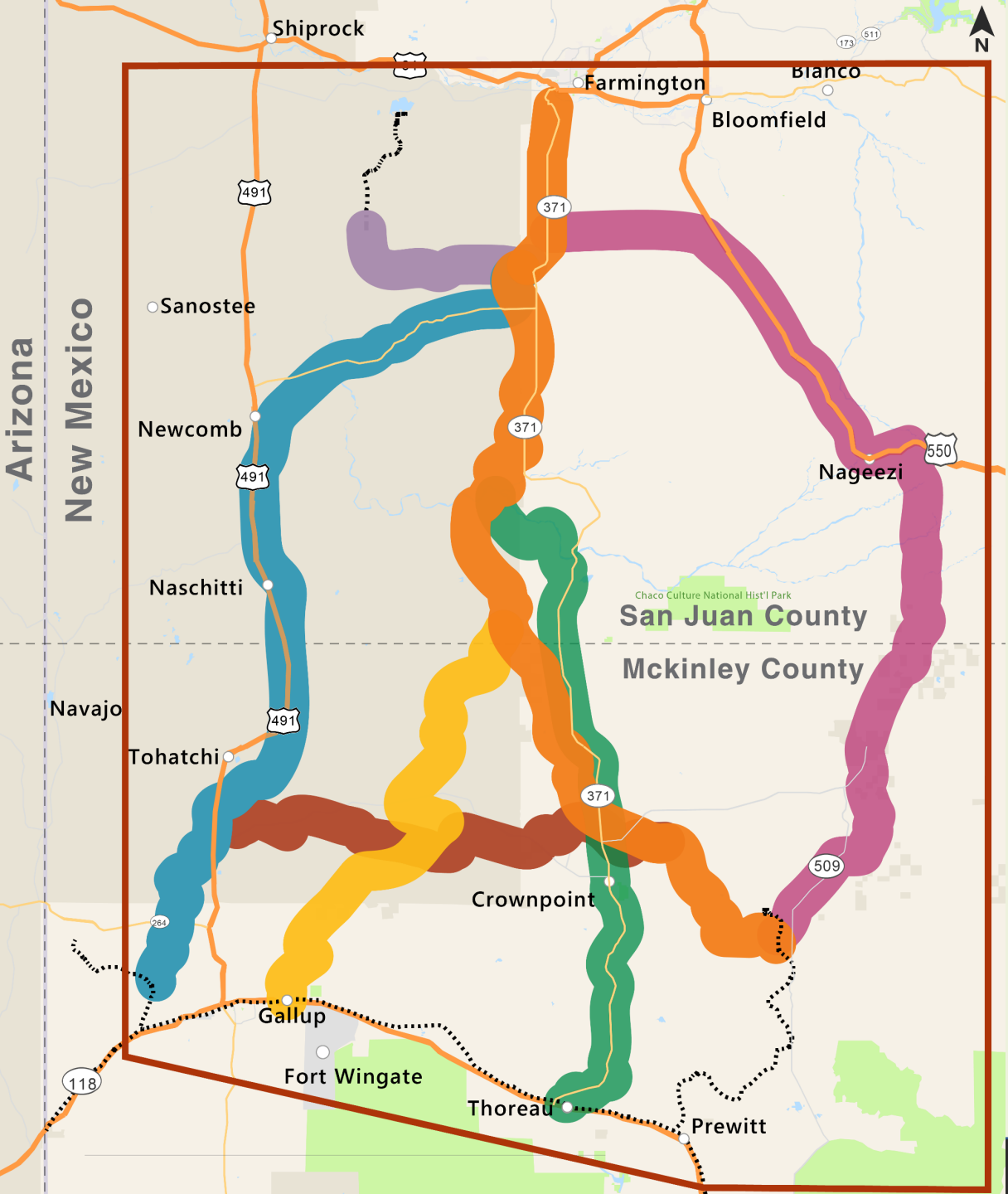
Complete:
October
2024



Potential Goods Shipped By Rail



Recommended Alignment Routes



Four Corners Freight Rail Study - Conceptual Route Options

- Defiance
- El Segundo
- Gallup
- Star Lake
- Thoreau
- East West Connector
- Navajo Mine Connection
- - - - - Existing Rail Line



Tell us what you think & stay connected

- Take a moment to share your thoughts
- Sign up to receive study updates



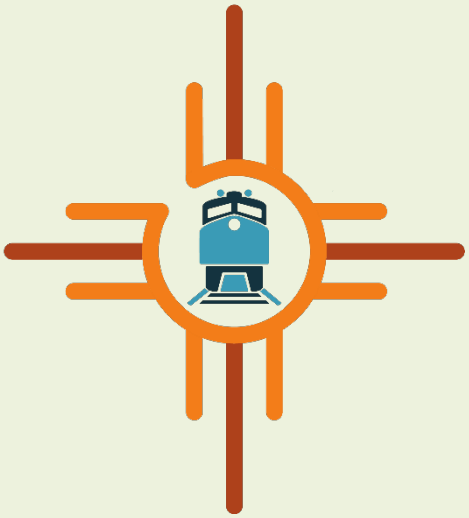
Fill out a comment card, or just leave us your email address. We'll add you to our contact list and ensure you get the latest updates and information about the Four Corners Freight Rail Line Feasibility Study.

Visit the website: **4CornersFreightRail.com**



info@4cornersfreightrail.com

Questions?



4 Corners Freight Rail

Feasibility Study